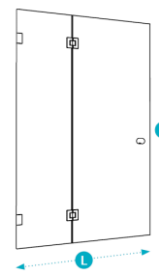


## Technical data sheet

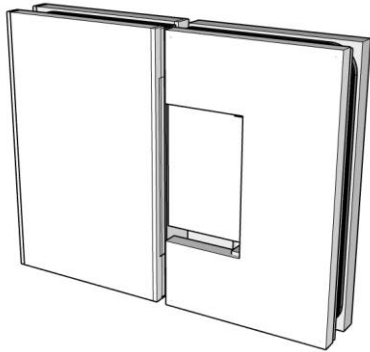
Description	<b>Name</b>	103 Inox Concept		
	<b>Line</b>	Personal		
	<b>Description</b>	Swinging door at 180° with 1 fixed panel		
	<b>Mounting possibilities</b>	Can be mounted between 2 walls Can be combined with 101/103/110/111		
	<b>Turning direction</b>	90° outwards and 90° inwards		
Measurements	<b>Article</b>	<b>Width</b>	<b>Height</b>	<b>Left/Right</b>
	103 001 001 ###	up to 800 mm	up to 2000 mm	Left
	103 002 001 ###	801 mm-900 mm	up to 2000 mm	Left
	103 003 001 ###	901 mm-1000 mm	up to 2000 mm	Left
	103 004 001 ###	1001 mm-1200 mm	up to 2000 mm	Left
	103 005 001 ###	1201 mm-1400 mm	up to 2000 mm	Left
	103 006 001 ###	1401 mm-1600 mm	up to 2000 mm	Left
	103 007 001 ###	1601 mm-1800 mm	up to 2000 mm	Left
	103 001 002 ###	up to 800 mm	up to 2000 mm	Right
	103 002 002 ###	801 mm-900 mm	up to 2000 mm	Right
	103 003 002 ###	901 mm-1000 mm	up to 2000 mm	Right
	103 004 002 ###	1001 mm-1200 mm	up to 2000 mm	Right
	103 005 002 ###	1201 mm-1400 mm	up to 2000 mm	Right
	103 006 002 ###	1401 mm-1600 mm	up to 2000 mm	Right
	103 007 002 ###	1601 mm-1800 mm	up to 2000 mm	Right
	<b>Made to measure</b>	Possible per mm, width up to 2000mm. Height can be modified		
	<b>Glass beveling</b>	Included		
Glass	<b>Glass specifications</b>	8mm toughened safety glass (norm NBN 23-002, classe NBN EN 12600)		
	<b>Type of glass</b>	101 Transparent	107 Green	119 Opal white
		130 Timeless	108 Blue	120 Opal Black
		102 Opal mat	114 Crepi	125 Opal bronze
		104 Extra transparent	115 Cathedral	126 Opal gris
		105 Bronze	116 Ribble	121 Mirror
		106 Gris	118 Black	
	<b>Glass treatment</b>	109 Aquaclean	110 Zone intime	111 Zone à la carte
		112 Print		
Finishings	<b>Characteristics</b>	2 hinges, round doorknob		
	<b>Finishing ###</b>	Shiny (011), Matte (001), Black Matte (099), White Matte (088), Optic Nickel Brushed (021), Optic Nickel Polished (022), Optic Gold Brushed (031), Optic Gold Polished (033), Optic Rosé Gold Brushed (041), Optic Rosé Gold Polished (044), Optic Bronze Brushed (051)		
	<b>Stabilizing bar</b>	other colors on demand Stabilization bar 45° (500mm)		
Service	<b>Checking of measurements</b>	Included in the price		
	<b>Mounting</b>	Possible at an additional cost		
	<b>Mounting guidelines</b>	Available		
Sealing strips	<b>Characteristics</b>	Bottom seal, intermediate seal and closing seal		
		UV-resistant according Xenon test 1200 with cycles 120/18 Transparent according to RAU-PVC1107 Anti mould according to DIN5373		
Technical details	<b>Advice</b>	Non-adjustability		
		A profile or glass must always be placed on the tiling. Otherwise, this can lead to issues with waterproofing. When preparing, take into account the size and weight of the glass. Can the glass be brought into and installed in the bathroom.		



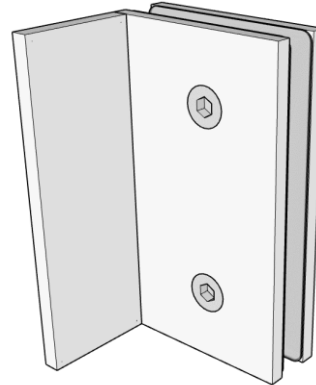
Technische fiche specifications

103 Inox Concept

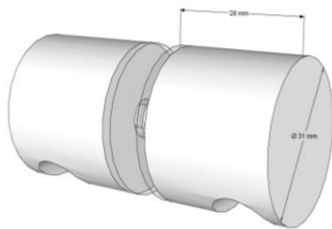
Hinge



Wall mounting



Doorknob



Stabilisation bar

